



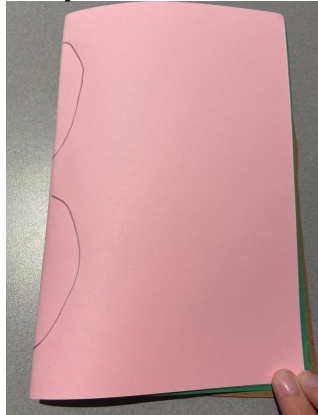
# Crafting with Mia: Making a Wreath

1. Take your paper plate and poke a hole in the center using your scissors.
2. Cut around the plate so only the edge remains.
3. Take a piece of construction paper and draw the outline of a leaf (or as many leaves as you want!)
4. Stack up your pages of colored paper, putting the paper with the leaf on top. Then, fold your pieces of paper along the center of the leaf.
5. Cut out the outline of your leaf or leaves.
6. Repeat steps 3-5 as many times as you want until you get enough leaves.
7. Put your leaves all around the paper plate edge using tape or glue.
8. Use a hole punch to create a hole in the paper plate. Make sure not to hurt your leaves!
9. Tie a string or ribbon through that hole and now your wreath is ready to be hung!

## Step 1 & 2



## Step 3-



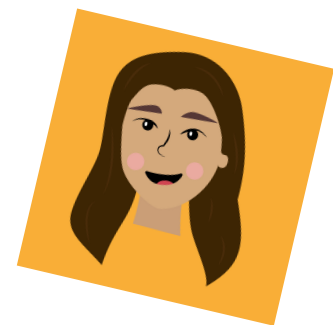
## Step 8 & 9



## You will need:

- paper plate
- colored paper
- scissors
- markers
- ribbon or string
- hole puncher
- pencil
- tape/glue

## Step 7



Instructions by Madeline Oberle

